

BENZ C6 Update Bulletin

Update content

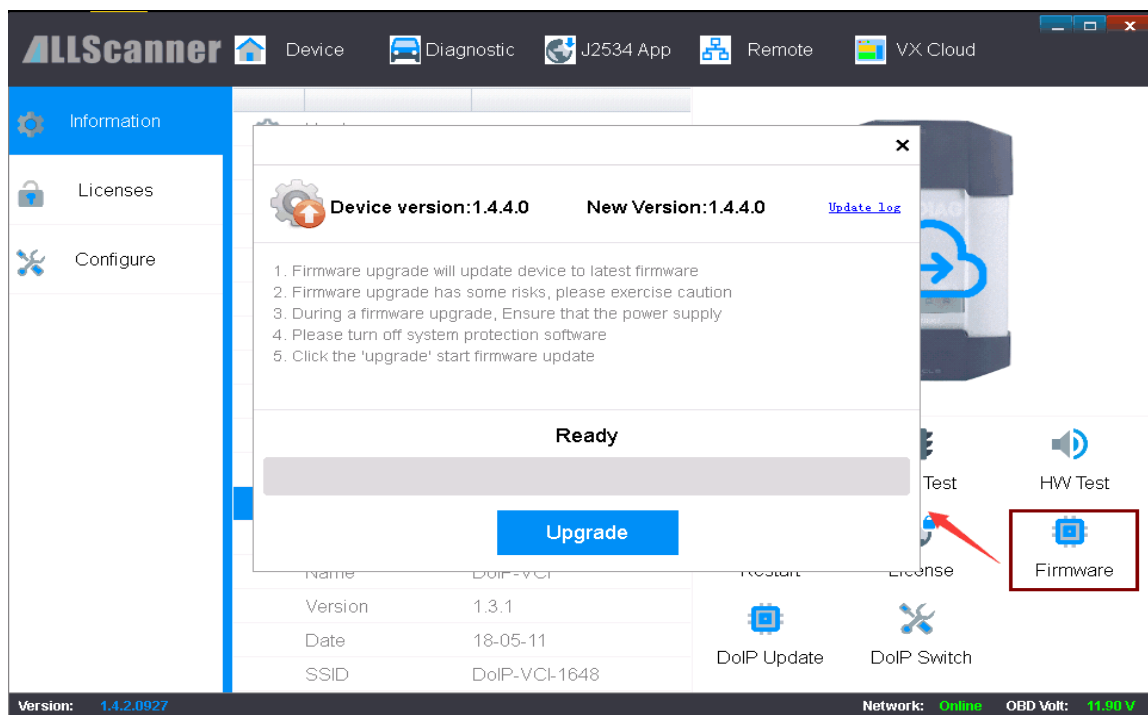
2018.05.14 V3.0.1.508

* Release of XENTRY Diagnosis VCI C6 driver and adaptation software
XENTRY XDOS 2018.05

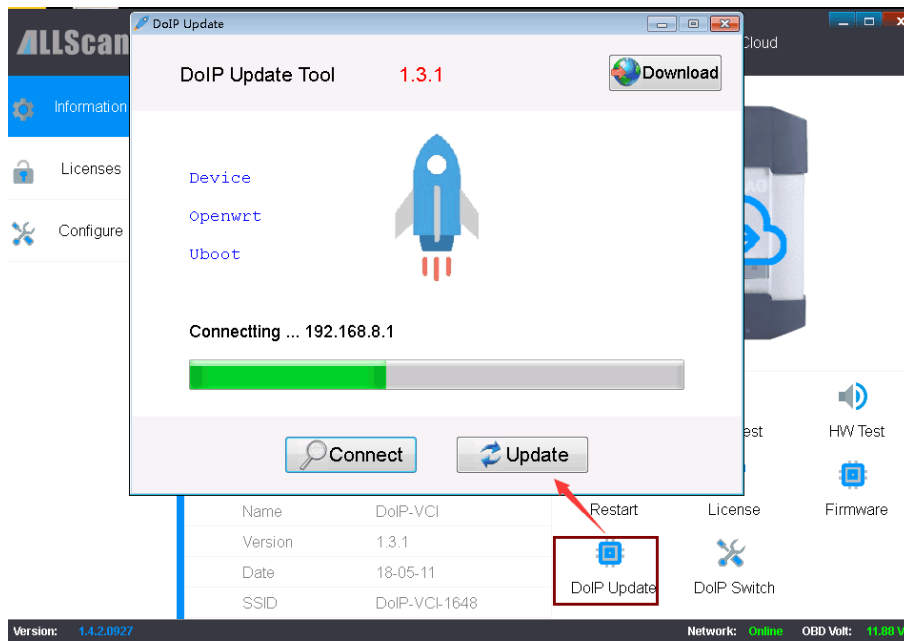
Update step

Once the XENTRY XDOS 2018.05 software installation is configured,
install the VX Manager client and perform the following steps

1. Upgrade VCX firmware version to 1.4.4.0



2. Update DoIP firmware version to 1.3.1



3. Install BENZ C6 driver



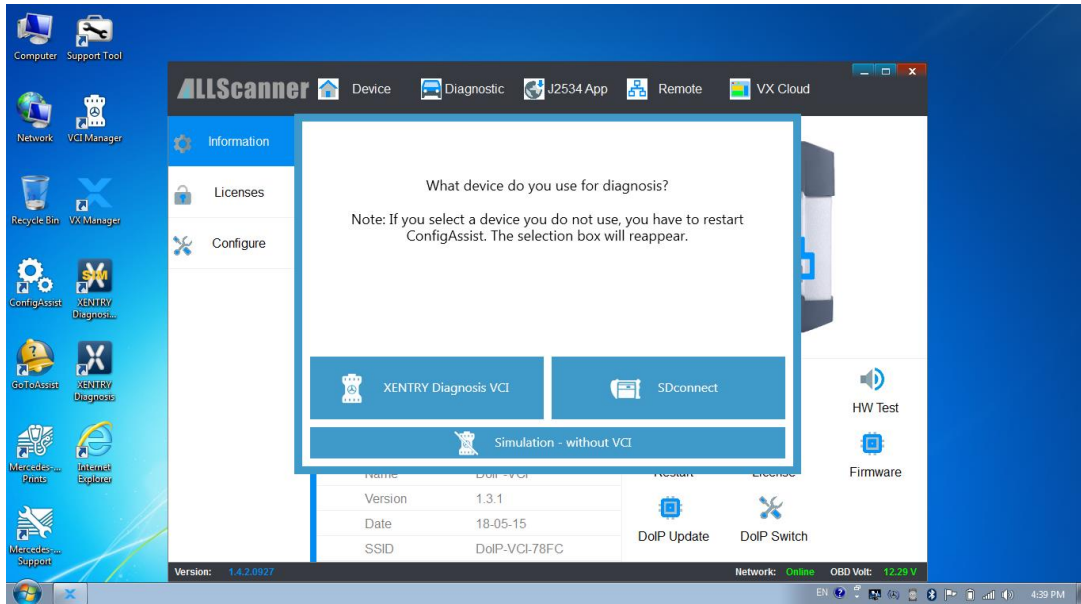
C6 configuration step

Note: in the case of self-installed XENTRY software, you need to

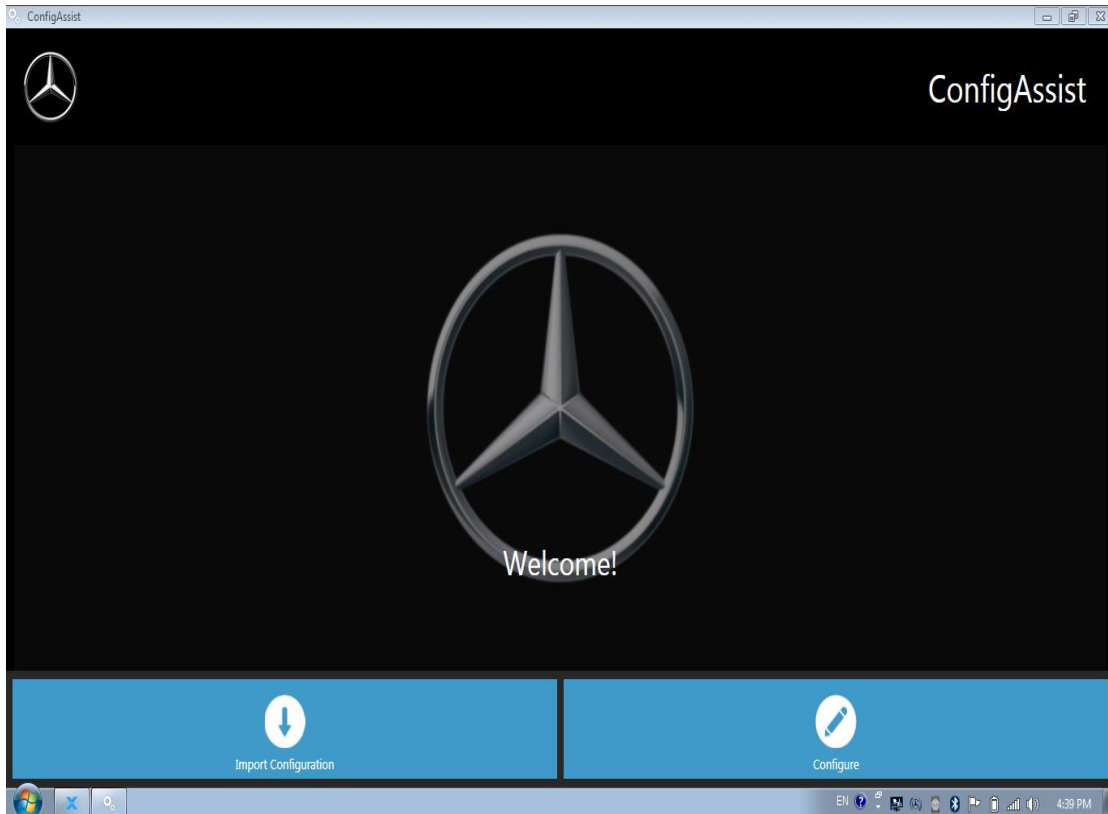
configure the diagnostic device by following these steps

1. Configure diagnostic device, select XENTRY Diagnosis

VCI



2. Click configuration



3. Click on to continue

Information about scope of supply & accessories

1. XENTRY Diagnosis VCI
2. WLAN stick
3. OBD cable (16-pin)
4. USB cable (5 m)
5. User and safety information
6. Software update BD

Available accessories

4. Click on to continue

Information about new product features

You can find additional information by selecting a described element.

5. Unable to detect StartKey. click enter StartKey manually

The screenshot shows the ConfigAssist application window. At the top, the Mercedes-Benz logo and the text "ConfigAssist" are visible. Below the header, the title "Install StartKey" is displayed. A progress bar consists of five icons: a briefcase, a globe, a database, a checkmark, and a lock. The globe icon has a green checkmark above it, and the text "StartKey installed successfully." is centered below the progress bar. The main content area is divided into three panels:

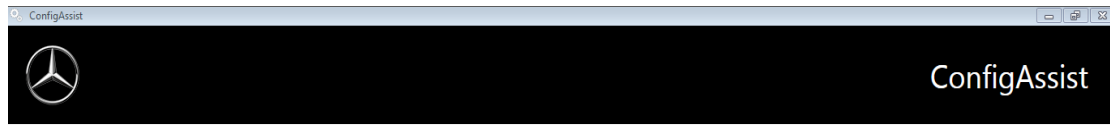
- Device data:** Shows Hardware ID (46796835A5CF) and App ID (252) with an "Export" button.
- StartKey:** Shows "Valid from 2009/1/1 to 2030/1/1" and "Select StartKey source" with three buttons: "Online", "USB stick", and "Manual".
- StartKey Ordering:** Contains the text "To order your StartKey, please get in touch with your known contact."

At the bottom, a navigation bar includes "Back", "Start Page", a progress indicator with a lock icon, "Skip", and "Apply & continue". The Windows taskbar at the very bottom shows the time as 4:45 PM.

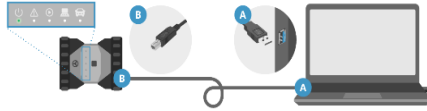
6. Save Key and click apply and continue

This screenshot is identical to the one above, showing the ConfigAssist application window. The progress bar and "StartKey installed successfully." message are present. The "StartKey" panel shows the "Manual" button selected. The navigation bar at the bottom shows the "Apply & continue" button highlighted, indicating the user's next action.

7. Click Application and continue

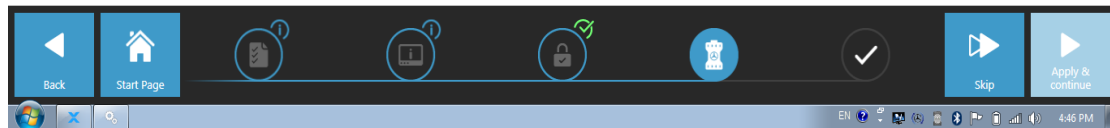


Couple XENTRY Diagnosis VCI

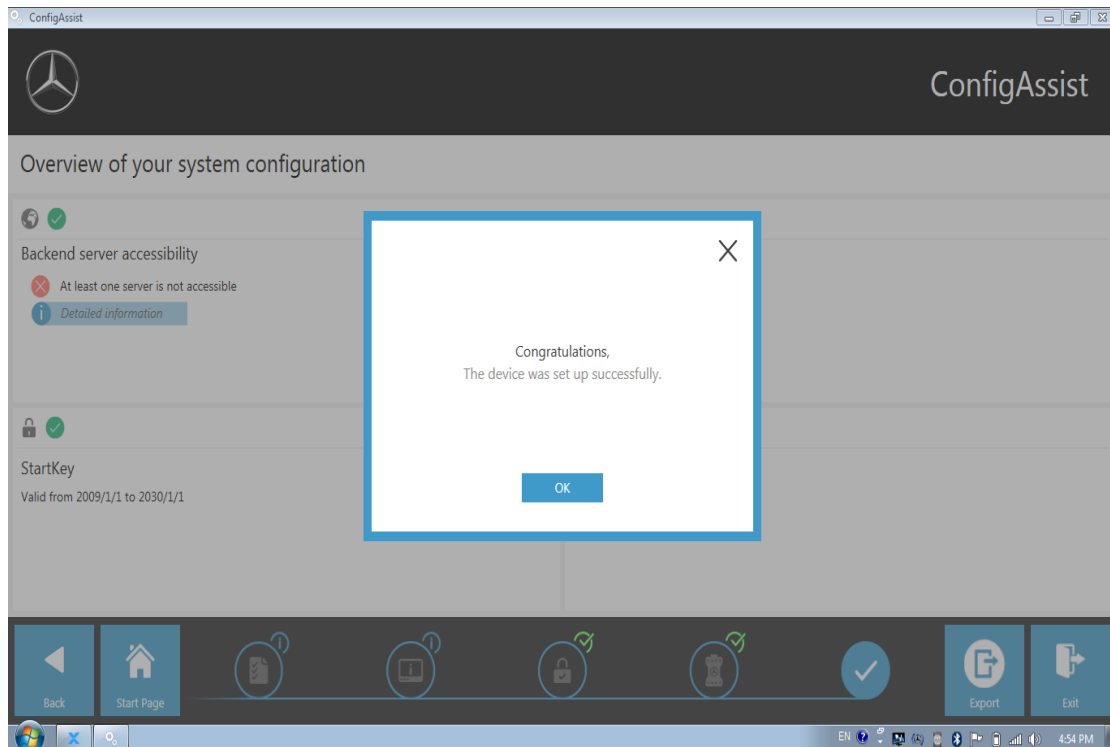


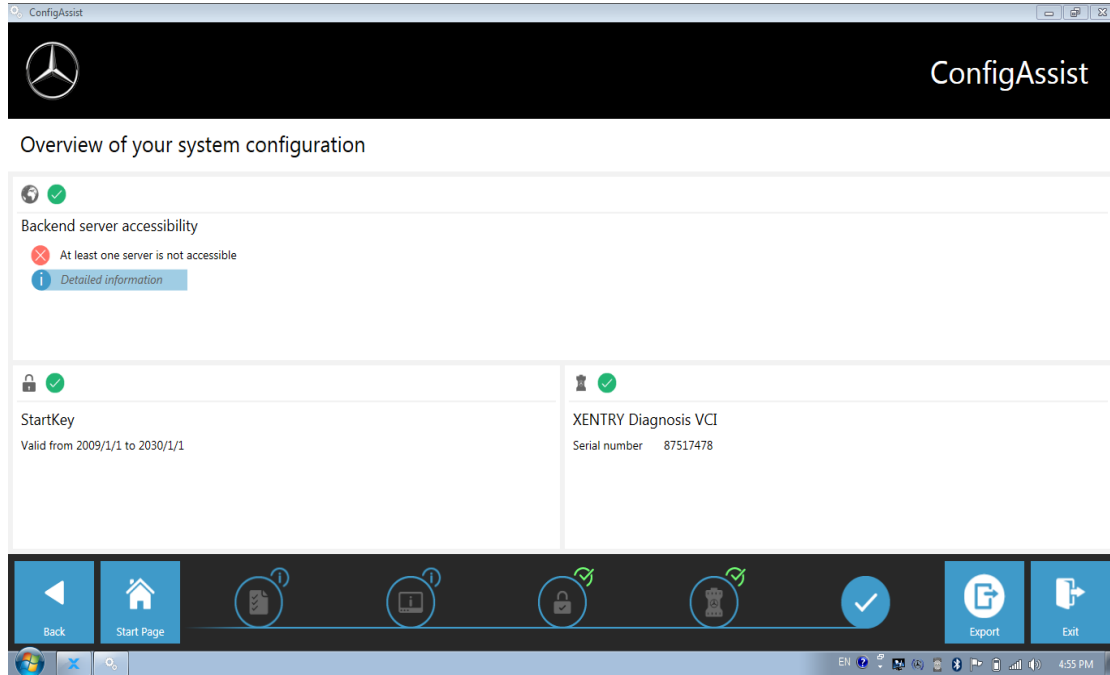
First connect the supplied WLAN stick to a USB port on your diagnostic computer. Then use a USB cable to connect the VCI to a USB 3.0 port on your diagnostic computer. Wait until the XENTRY Diagnosis VCI beeps and then click on "Couple XENTRY Diagnosis VCI".

Couple VCI



8. Configuration complete, click exit





**Complete configuration needs to restart the
computer!**

**Successful configuration and normal device
connection will display this icon on the
desktop or taskbar**